



European Alliance of Property and Facilities Management Services

UK, The Netherlands and France

Three of Europe's largest providers of property and facilities management, Capita, MVGM and Yxime, have formed an alliance to assist investors. We deliver cross border services for clients in the UK, The Netherlands and France, giving investors local insight and easier access to these key European property markets.

Collective expertise of the PM & FM European Alliance

More than  
**13,000,000** sqm  
of commercial real estate and **100,000** residential assets under management.

Assets managed have a combined value in excess of **€40bn** We collect and administer rent and service charges in excess of **€2bn pa**

**1,200**  
dedicated and experienced PM & FM staff delivering services.



This alliance is for investors who have access to a diversified portfolio of international assets and markets at different stages of the investment life cycle.

We offer a simple way to maximise returns by providing a consistent, quality service irrespective of the asset type, geography, investment timeline or strategy.

Act for a number of leading **international** and **domestic** investors.



Property Management is at the heart of our activities, enabling us to share ideas and innovations, which gives our clients a commercial advantage.

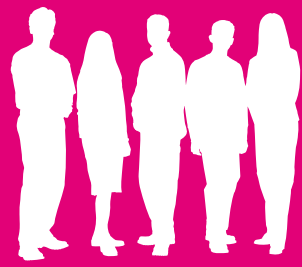
Services and Delivery

A consistent service is more than doing things the same way. We harness local cultures and management practices and use our overall brand strength to add further value. The shared values of innovation, teamwork and quality allow for a mutual approach to service delivery which maximises the returns to our clients.

With many combined years of experience, our businesses understand the markets we operate in and successfully leverage local relationships to deliver a sustainable approach. We will continue to expand the depth and breadth of services on offer to match and exceed market requirements to create a network that genuinely adds value to our clients.

While providing sophisticated performance management analysis and reporting we also manage the increasingly **complicated risk** and compliance regimes, with representation at both EU and domestic levels.

We cost effectively procure and manage your assets and portfolios. We also provide transaction advisory services, such as technical due diligence, pre-acquisition management health-checks, deal sourcing and transaction management.

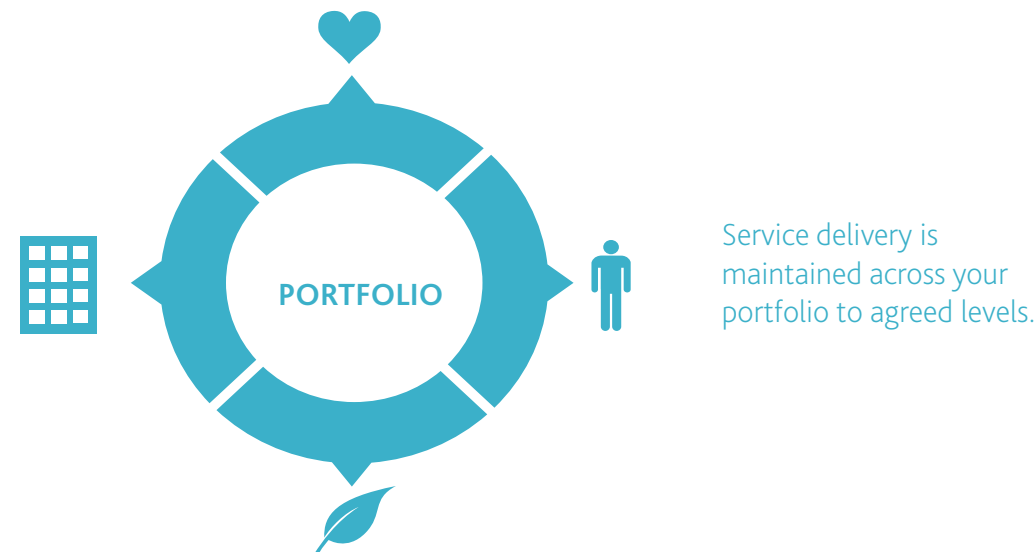


Partner in Property

As your partner in property, we will offer you a single point of contact to manage your portfolio across the UK, The Netherlands and France. Your relationship manager will make sure:

Assets are transitioned from existing managers efficiently. Objectives and strategies for each market are clearly understood and shared with local teams.

All contract documentation (including fees and any KPIs) is consistent with those objectives and strategies.



The partners work for some of the largest organisations in Europe, including:

**AXA REIM, Commerz Real Investment, La Française AM, LaSalle Investment Management, PATRIZIA Immobilien AG, Royal London Asset Management, Syntus Achmea Real Estate and Finance and Union Investment Real Estate.**



CAPITA

Capita | Real Estate  
**Robert Stark**  
Operations Director - Management Accounts

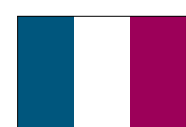
65 Gresham Street,  
London, EC2V 7NQ | UK  
Tel: + 44 (0) 20 7544 4282  
Email: robert.stark@capita.co.uk  
www.capitarealestate.com



MVGM

MVGM International Advisory  
**Michiel Assendelft**  
Managing Director

P.O. Box 1800 2280 DV  
Rijswijk | The Netherlands  
Tel: +31(0) 6 2245 04 30  
Email: Mjp.assendelft@mvgm.nl  
www.mvgm.nl



Yxime

**Thierry Chorison**  
Président Chairman

Tour Europlaza - La Defense 4  
20, Avenue André Prothin  
92 927 Paris La Defense CEDEX | France  
Tel: +33 (1) 47756480  
Email: tdorison@yxime.fr  
www.yxime.fr